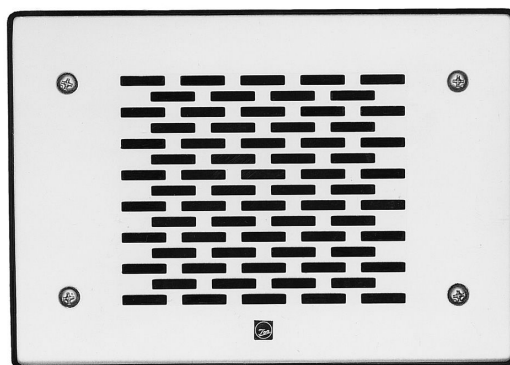


The PC-391 is a small flush-mount wall speaker. Its ideal applications include hotel and hospital rooms, and reception counters in the banks and clinics.

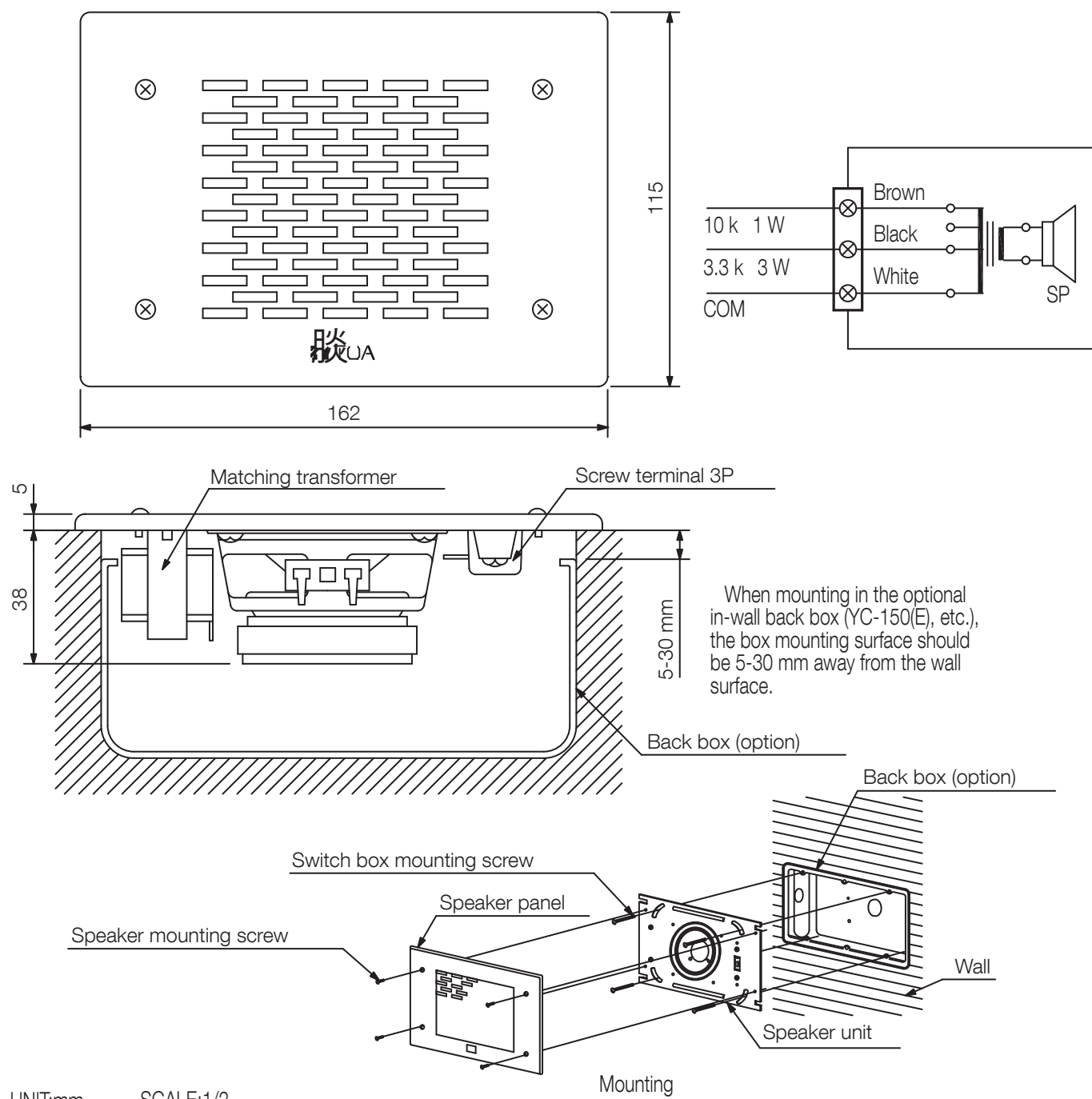


Order no: PC-391 Y

Specifications

Frequency response	150 Hz - 18 kHz
Sensitivity (1#V, 1#n) (combined)	86 dB
Speaker component	7.7 cm cone-type
Rated input	3 W
Rated impedance	3 kΩ, 10 kΩ
Dimensions (W x H x D)	162 x 115 x 43 mm
Dimensions (ø x D)	x 43 mm
Finish	Stainless steel, Aluminium, silver metallic

Appearance



UNIT:mm

SCALE:1/2